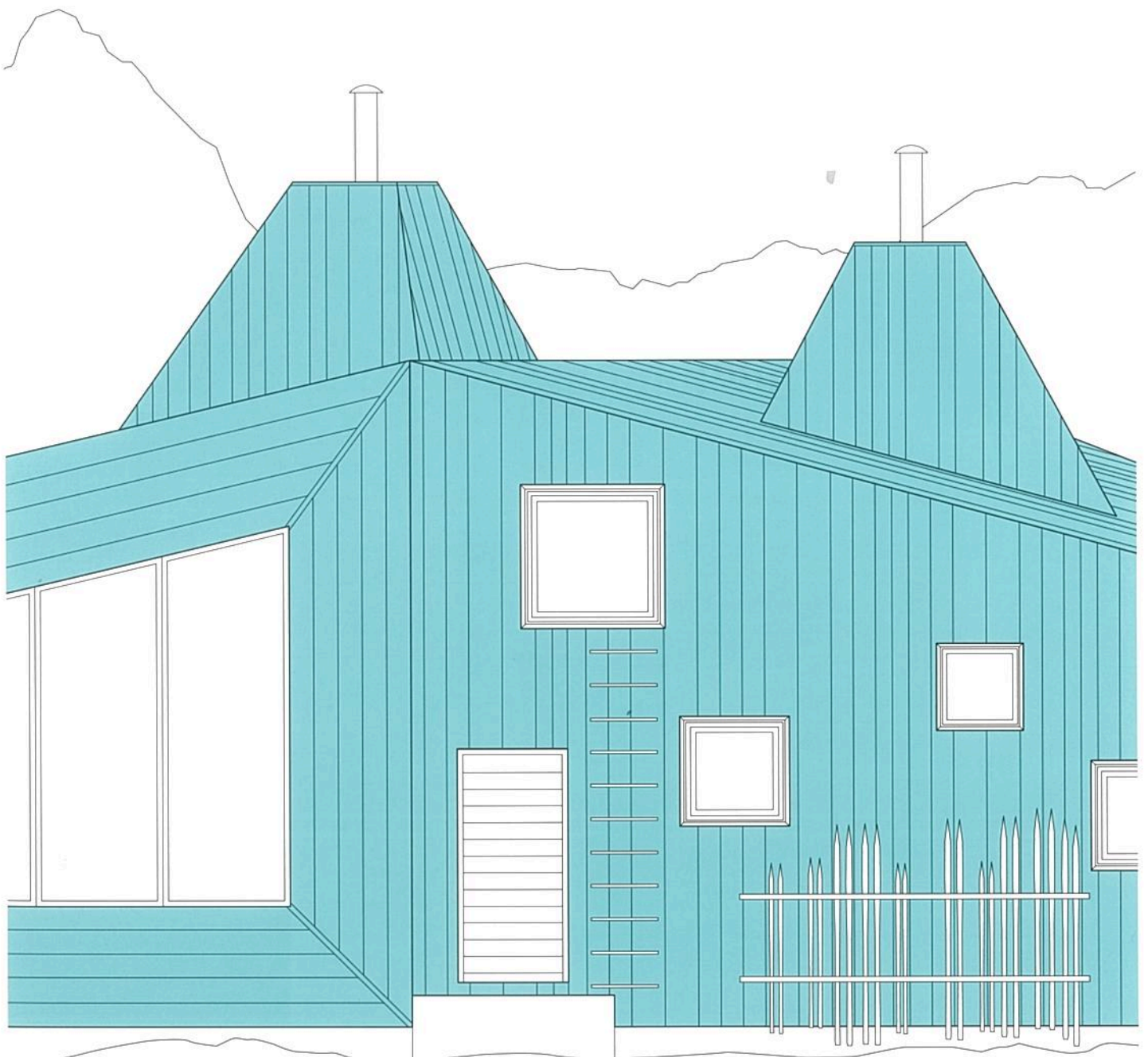
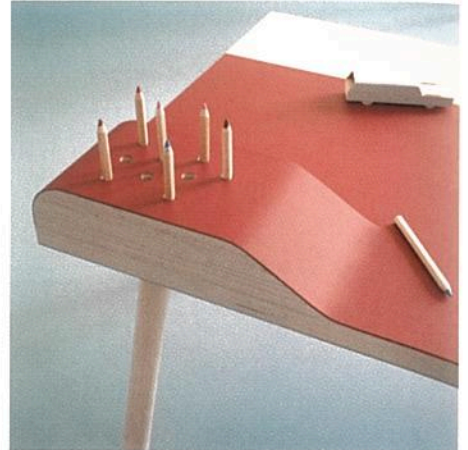


English Edition

DETAIL

Review of Architecture and Construction Details · Bioclimatic Construction · Vol. 2017 · 4





Distressed appearance is key feature of extended product lines

Iris Ceramica continues its collaboration with international lifestyle brand Diesel Living by launching seven new product lines of floor and wall tiles. The surfaces accentuate the aesthetic characteristics of materials marked by time and stressed by heat and light. Wood and stone combine with oxidised sheets and grids of metal, glass and cement in a continuous play of reflection and shade, offering a new outlook for contemporary living, says the company.

Said the Iris Ceramic Group CEO Federica Minozzi, "If the goal of this collaboration in 2016 was to demonstrate the potential of porcelain stoneware and the ability of Iris Ceramica to make it take on original visual aspects and unexpected tactile qualities, this year it's to develop a more extensive design disposition around these technical skills, fully capitalising on the distinct, unique character of this partnership.

"The new offerings were designed to meet the requirements of the most demanding and creative consumer, but are also offered as a broad and alternative array of solutions

at the service of the world of contract." Top is Grunge Concrete – on the wall in Rebel Black 60 x 60 cm tiles and on the floor in Scratch Tan 120 x 60 cm tiles. Above, left, is the 10 x 30 cm Shades of Blinds wall tile in Pink with Grunge Concrete Scratch Black 120 x 60 cm tile used for the flooring. Below, Combustion in Black Cracked 120 x 20 cm size tile on the wall has been teamed with Combustion in Beige colourway on the floor in size 120 x 30 cm.

Other new designs comprise: Arizona Concrete, which resembles a cement-like surface; Fence, a woven mesh decoration; Ribbed Monochrome whose surface is characterised by metallic and crazing finishes; and Ribbed Oxide, with nuances of shaded colour and relief markings giving an effect of oxidised metal. In total there are now 12 collections of surfaces, between them offering a rich colour palette with a wide choice of different finishes and decorative designs to enable the creation of individual, contemporary room schemes.

www.irisceramica.com



New colours refresh the palette

Forbo Flooring Systems has refreshed its Furniture Linoleum Desktop surfacing collection with a new contemporary colour palette. The rejuvenated range now offers specifiers and designers a modern, natural surfacing material that delivers a beautiful high-end finish to a variety of furniture designs, says the company.

This product has won a number of design accolades, including the Red Dot design award, the award for Good Industrial Design and the Interzum Award. Sustainability is also a key factor; Furniture Linoleum Desktop is manufactured using a very finely ground linoleum granulate, created from linseed oil and natural pine rosin, to which wood flour and colour pigments are added.

The satin-matt surface is designed to acquire a patina over time and, combined with its warm and tactile texture, will give a distinctive and individual look and feel to items such as desks, chairs, doors and cabinets. Another feature is that it doesn't show fingerprints. The new palette offers a selection of 21 shades ranging from soft and natural hues to vibrant colours, in addition to classic greys and black.

www.forbo-flooring.co.uk/furniturelinoleum

